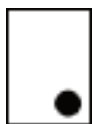
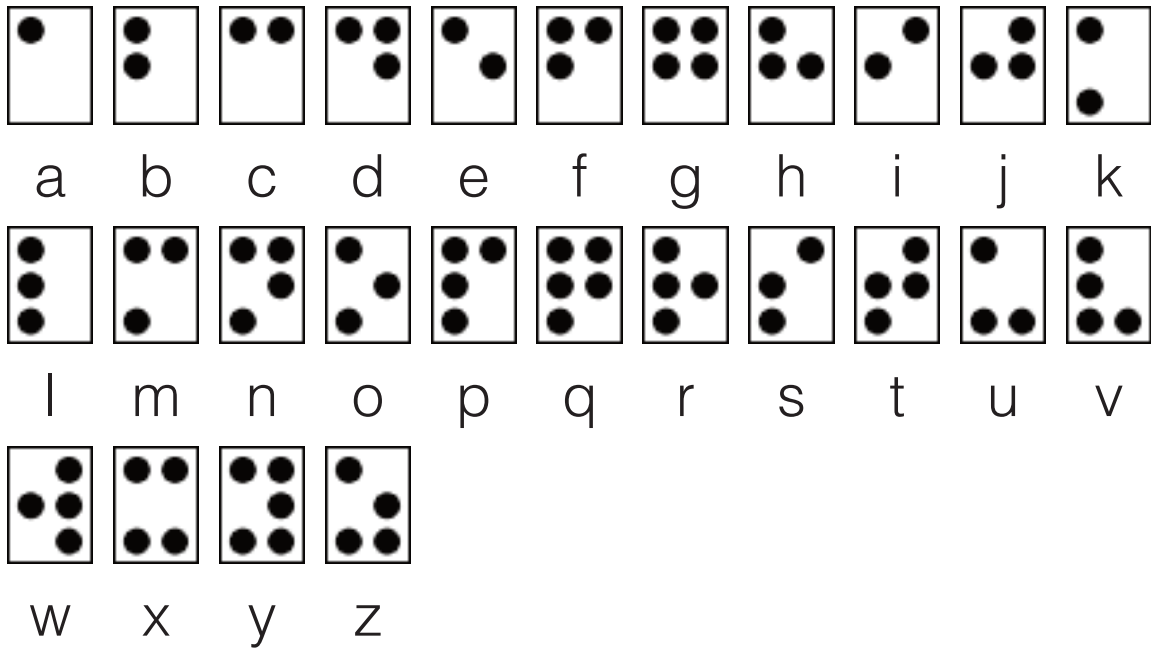


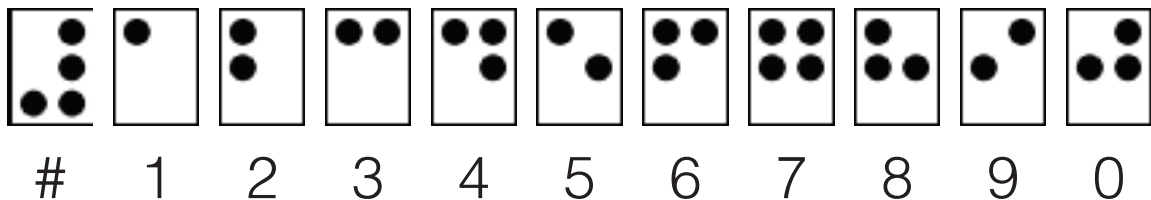
# BRAILLE GAMES

Play the games by colouring dots in the braille cells. Each cell is arranged with six dots, 3 in each column. The full braille cell at the beginning of each line will help you to position the dots in the games correctly. Here is a braille guide to help you play the games.



The capital sign placed before a letter capitalizes it.

Braille numbers are made using the first ten letters of the alphabet, "a" through "j", and a special number sign, dots 3, 4, 5, and 6.



Larger numbers only need one number sign.  
The comma in braille is dot